

Igni-Power for Kawasaki 800 SX-R

FOR COMPETITION USE ONLY

No warranty of any engine damage

WARNING!

This is a powerful tool that can yield great benefit for modified, limited or stock engines. However this tool is meant for *experienced engine tuners only*, and can easily cause severe engine damage if misused! Please use caution when using Igni-power for there is no warrantee for any engine damage related to the use of this product.

The change from the original ignition system to Igni-Power is very simple, just follow all of the included instructions.

We wish you great success with your new Igni-Power.



Included parts

- 1 x Igni-Power system(ECU)
- 1 x Mounting hardware
- 1 x Disc (software and manual)
- optional : Programming cable
USB_RS232 Adapter

Install instruction

Insert the included CD to the CD-Rom drive in your computer, and follow the instructions !

If the installation setup doesn't work, please copy the Igni-Power folder from the CD to your computer.

For the first setting, look in the “igni-Power\data” folder from the CD. The folder include a setting for a stock and limited engine.

The Igni-Power Team is looking forward to crate new setup and setting datas. You can download the datas at **Lwo.seadoo-racing.com**. Please save the download in your data folder.

Read the manual and follow the instructions.

Igني-Power connector

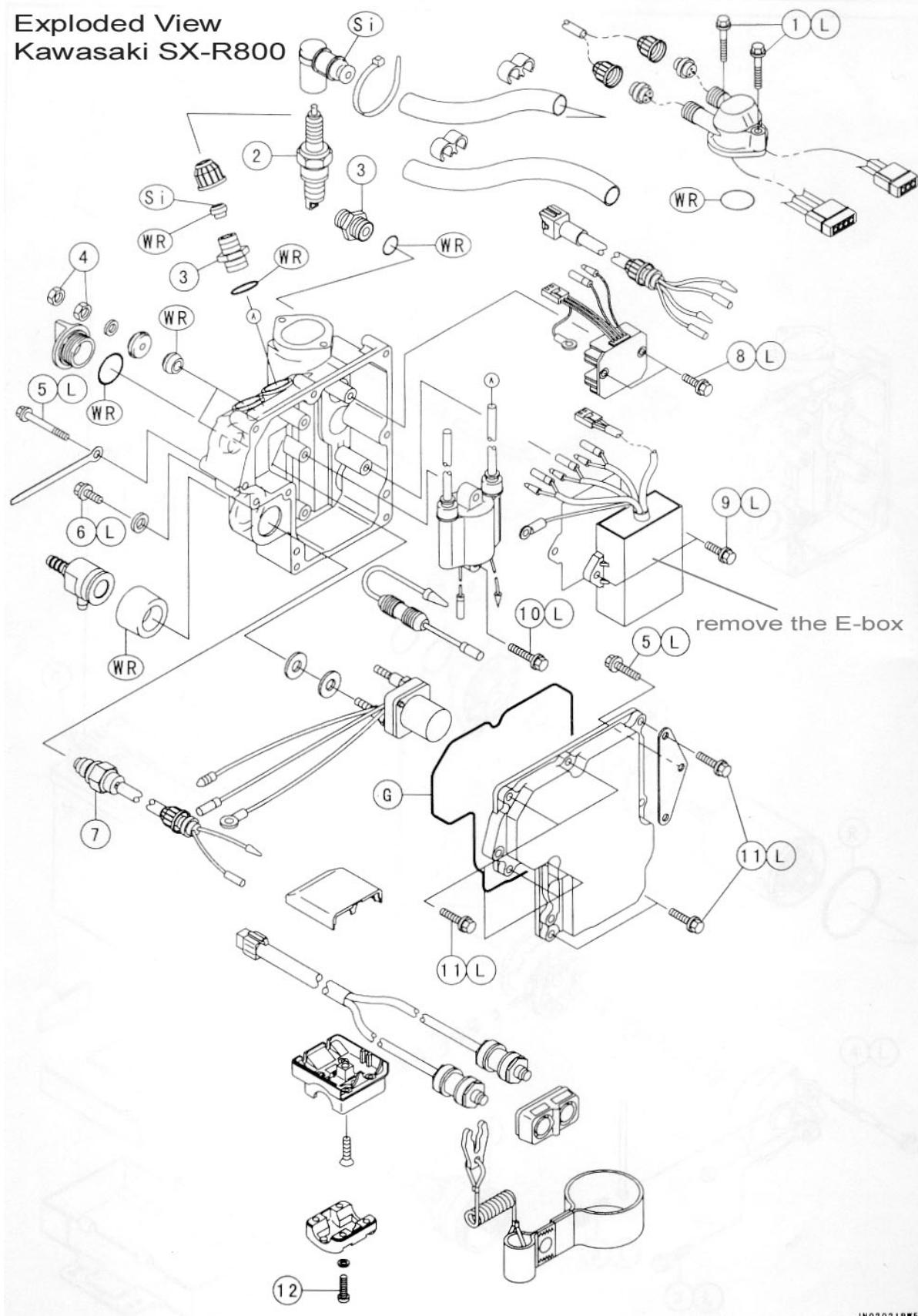
rot	supply +12 V
black	ground
green	inlet for crankshaft position sensor (CPS)
blue	ground (for CPS)
white	inlet for engine OFF switch (KILL SWITCH)
orange	outlet to inductive coil IC
RS232/sub D	connection to PC is realized by 9-pin serial port (COM)

Note:

Please consult your OEM shop manual to assist in ignition system removal and installation.

Step 1: Remove the original Ignition.

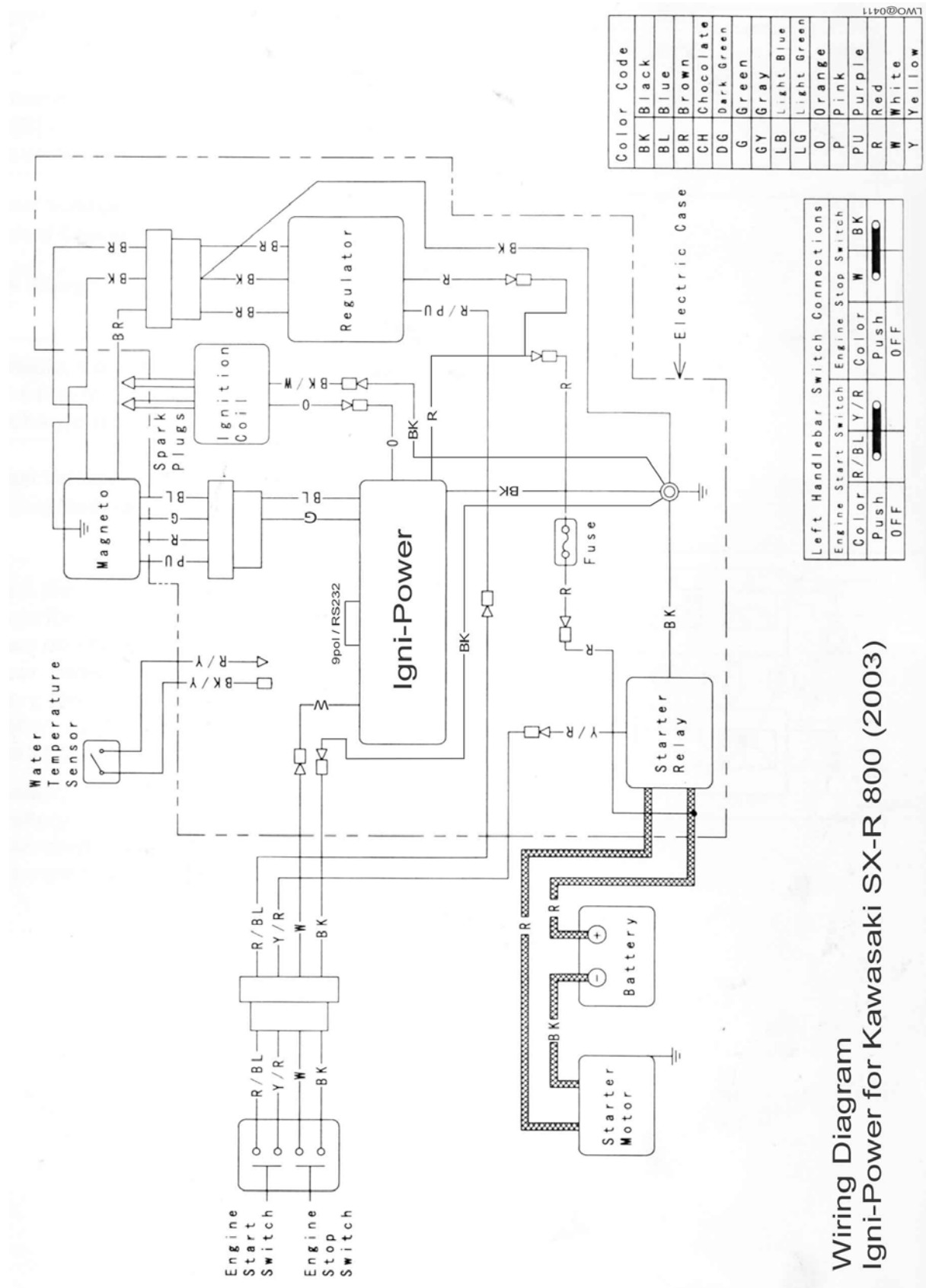
**Exploded View
Kawasaki SX-R800**



JW020218W5 (

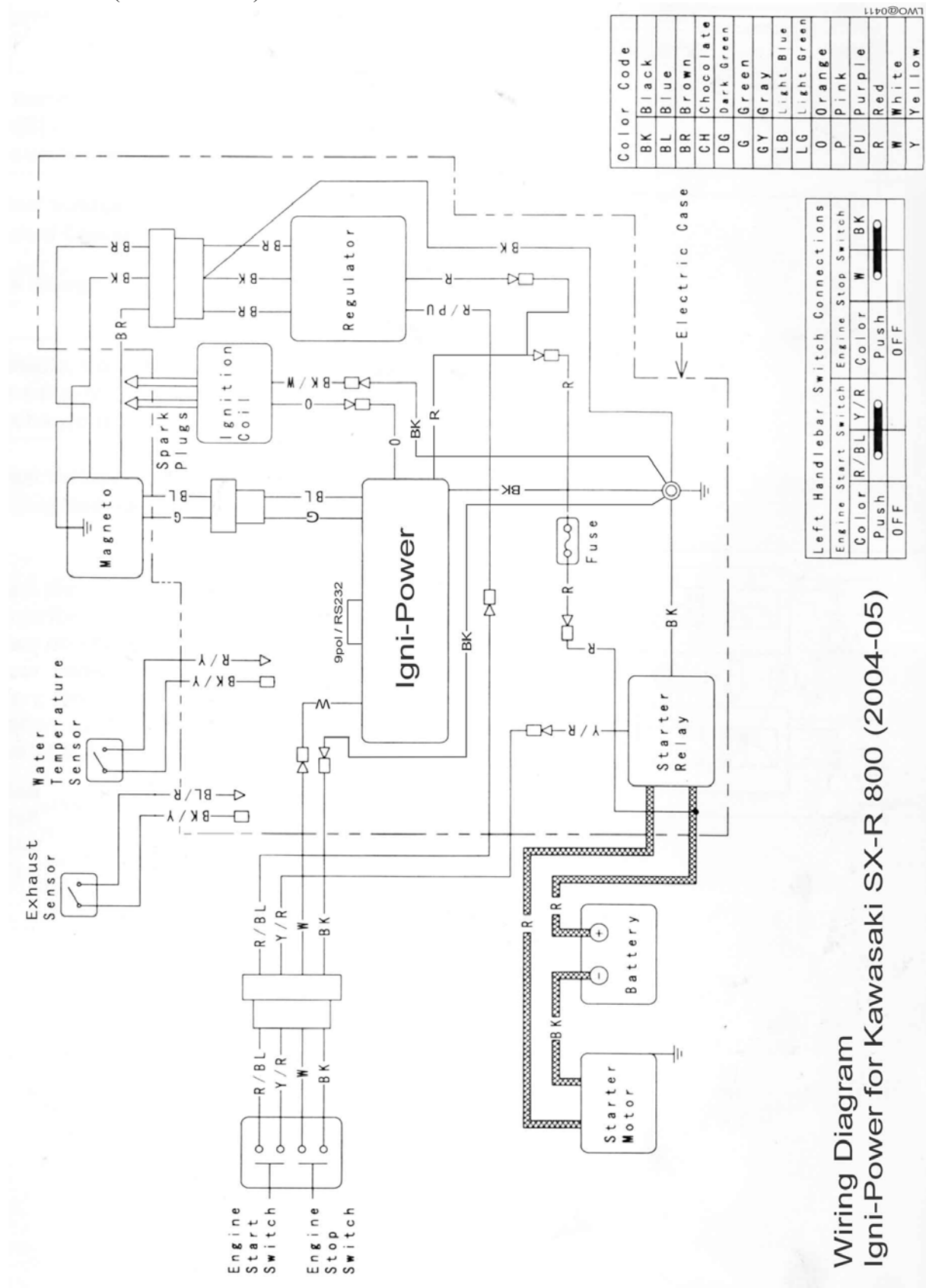
If the watercraft is not in use for longer than a few weeks, please remove the GND terminal from the battery to prolong battery life!

Step 2: Install the Igny-Power in your system, see the follow wiring diagram (**2003mod.**).



If the watercraft is not in use for longer than a few weeks, please remove the GND terminal from the battery to prolong battery life!

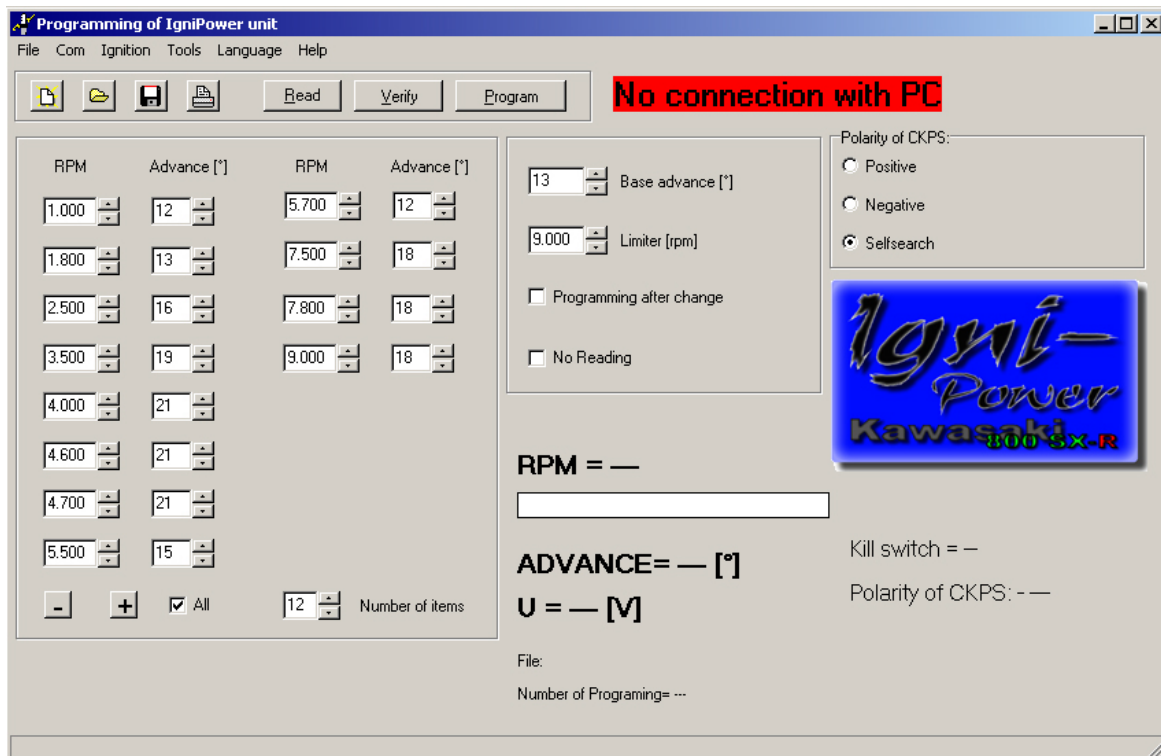
Step 2: Install the Igni-Power in your system, see the follow wiring diagram
(2004-05mod.).



If the watercraft is not in use for longer than a few weeks, please remove the GND terminal from the battery to prolong battery life!

Software Igni-Power.EXE

Igni-Power.EXE Always open with default calibration file ! (original Kawasaki data)



Pull down menus

File - includes items

- | | |
|--------------|---|
| New | - default settings (original Kawasaki data) |
| Open | - opens data file |
| Save | - saves data into file (to "Igni-Power\Data" folder) |
| Print | - prints the current settings |
| Exit | - exits the program |

Com - includes items

Com1 to Com10 - selection of communication line

Device - includes items

- | | |
|----------------|--|
| Read | - reads data from the unit |
| Verify | - compares data in PC with data in the unit |
| Program | - sends data to the unit and conducts verification |

Tools – include items of collective settings

Language – language settings: **English, French, and German**

Help – includes items

- | | |
|--------------------------|--|
| Help | - opens assembly guide (this file) |
| About the program | - data on the software (version, date) |

Icons menus



- Default settings (**original Kawasaki data**)

Warning!!! Clicking this icon results in automatic default settings of all parameters



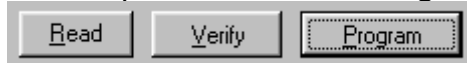
- opens data file



- saves data file



- prints the current settings



- see pull down menu **Device**

Setting element

15 adjustable options for revolution/advance

Collective adjustment of all the advance curve points at one time can be done by collective change tool (+ and – buttons with selection **All**)

When the motor is running current segment is highlighted in the advance curve. Use of collective change tool + and – button without selection **All** - just the current segment will be changed.

Number of items - here is it possible to set number points of advance curve

Base advance - here is necessary inscribe value of base advance
normally **13°** (Kawasaki SX-R 800)

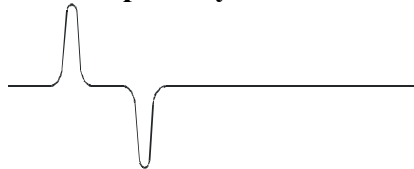
Limiter - here it is possible to set the maximum RPM for engine protection

Programming after change - automatic programming settings after every change

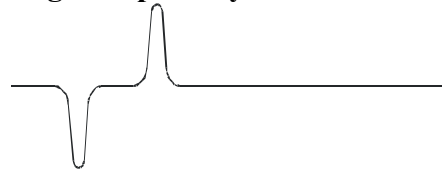
Option for CPS polarity

Ignition can work with both polarity of CPS (**Positive** or **Negative**). Appropriate polarity can be set by software Igni-Power.EXE.

Positive polarity of CPS:



Negative polarity of CPS:



If is impossible to determine polarity, third option **Self search** can be used. This option bat can bring some problems, especially for engines without starter.

Number of programming: - number of times the unit has been reprogrammed

File: - program file location (full path)

Monitor

Monitor is located on the right and lower side of the screen – sensor values and motor operational characteristics can be observed here. If there is **No connection with PC** displayed in the upper right corner, the unit is not connected or the Com is not set properly.

RPM	- engine revolution [1/min]
U	- supply voltage [V]
ADVANCE	- ignition advance [°]
Kill switch	- KILL SWITCH activation signal
Polarity of CPS	- displaying polarity CPS

Establishing communication path

FOR COMPETITION USE ONLY

No warranty of any engine damage